



Open Mind

The Bulletin of Rosslyn Hill Unitarian Chapel

November 2013

'The happiest man is he who learns from nature the lesson of worship'

(-Ralph Waldo Emerson, Nature)



November Services

Sunday 3 November (11.00am & 7.00pm)

Rev Dr Patrick T. O'Neill preaching
'By Little Graces, Small Virtues'

One of the best kept secrets of the saints and the prophets of history is that great lives and great accomplishments are usually gained through the consistent discipline of character more than charisma, that little graces and small virtues multiply over the years to produce a life of integrity. Those who would impact the world must begin by improving the tiny territory of their own souls. Come join us for worship today...and bring a friend along.

Sunday 10 November (11.00am) Only

Remembrance Sunday

Rev Dr Patrick T. O'Neill preaching
'Vita Brevis, Ars Longa - Life Is Short, Art Is Long'

Hippocrates wrote in his 'Aphorisms': 'Life is short, art is long, timing is exact, experience treacherous, judgment difficult.' We are mortal, but there is something in our humanity which is of eternity, which transcends the bounds of our all-too-brief existence and sings our presence, announces our place in the great chain of being. Art is that singular activity which allows human beings to participate, however momentarily, in the godlike work of creativity. Come worship with us today. You will find a warm welcome here.

Sunday 10 November (7.00pm)

Remembrance Sunday Evening
Special Choir Concert, Georgina Drewe, Director
'The Armed Man'

The choir will be performing part of 'The Armed Man' by Karl Jenkins, this includes some truly sublime music, part of which the choir has sung in services earlier in the year. They will be accompanied by an instrumental group including trumpets, percussion, cello, piano and organ. We look forward to your support in attending this service, which promises to be very special. There will be a retiring collection in aid of the charity 'Merlin' which provides medical aid in war-torn areas.

Sunday 17th November (11.00am & 7.00pm)

Guest Speaker Marion Baker preaching
(Vice –President of the General Assembly))
'Changing Landscapes'

Marion explores the impact of our changing environmental landscape. Unitarians acknowledge that our inner spiritual landscapes are constantly changing as we journey through life. Challenges for us individually explore day by day.

Marion is the Vice President of the General Assembly of Unitarian and Free Christian Churches. Her term of office as President will commence in April 2014. Marion has been a Unitarian since her teenage years when she happened on our creed-less faith that allows individuals to question what it means to be spiritual in a rapidly changing world.

Sunday 24 November (11.00am)

Rev Dr Patrick T. O'Neill preaching
'When The Key Is Lost and All Falls Silent'

Nothing is forever, and we must all store up memories against the day when the key is lost and everything falls silent. Socrates once asked a student to explain the purpose of philosophy. The student said it was to teach us how to live. "No," said Socrates, "The purpose of philosophy is to teach us how to die." This Sunday a parable about lessons learned from a broken grandfather clock.

Sunday 24 November (7.00pm)

'Dancing into Stillness'

We invite you to a meditative evening of dance, ritual and reflection in celebration of this dark season. Please come and join us in support of the new formed 'Ministry of Dance' at our Chapel. Tea, coffee and biscuits will be offered after the service, and a collection taken to support our link with 'Crossroad Women's Centre' ([www: crossroadswomen.net](http://www.crossroadswomen.net)). We welcome and appreciate your support. Led by Rose Williams and Ingrid Tavkar

The Rosslyn Hill Unitarian Chapel
*The Unitarian Chapel
in the heart of Hampstead*



Unitarianism is spirituality without dogma and welcomes people of all religious faiths as well as those who are humanistic. Unitarians cherish and live by the values of love, compassion, a free mind, service to others, human dignity, and other similar values. It encourages each person to deepen their relationship with God, yet allows each person to understand God in their own unique way.

**The Chapel holds two services on Sundays,
at 11.00am and 7.00pm**

The morning service is more family-oriented, including activities for children led by professionally trained leaders, and a Children's Chapel is offered for children of all ages. The evening service is more intimate for those who prefer a more meditative tone.

Visitors and guests are always welcome!

The Chapel also offers a rich programme of social activities, covering a wide range of interests such as literature and poetry, Tai Chi, choir singing, monthly lectures, and a variety of monthly events for all age groups.

The Chapel is licensed for marriages, civil partnerships and other ceremonies.

**For more information, visit our website at
www.rosslynhillchapel.com**

Publisher's Statement:

"Open Mind" is a tool of outreach for Rosslyn Hill Unitarian Chapel. The views expressed in this publication reflect the spirit and substance of Unitarian values, as well as matters of concern to Unitarians, but are not necessarily shared by all members.

Submitting copy:

Unsolicited copy is welcomed and should be emailed to: RHUCbulletin@yahoo.com. All submissions may be edited for content and length (200 words) at the discretion of the Communications Team, who also reserves the right to reject unsuitable material. **Deadline** for submitting items for the **December** issue of 'Open Mind' is **Wednesday 20 November**.

From the Editor

November brings the dawning of the 'dark' and the beginning of winter. Leaves are falling off the trees, birds are migrating, animals go into hibernation, days are getting shorter and nights are getting longer.

What we make of November in the United Kingdom depends a lot upon whether we are a class half empty or a glass half full sort of person. Yes, it is colder and darker and the days are a lot shorter and the nights a lot longer. It is a time of forced adjustments, which once accepted, reveal a new set of possibilities and opportunities.

November offers opportunities to mark and participate in several holy days and festivals - All Saints' Day, All Souls' Day, first day of Diwali, Guy Fawkes Day, Muharram/Islamic New Year, Remembrance Sunday, American Thanksgiving Day, first day of Hanukkah, and St Andrew's Day.

Here at Rosslyn Hill Chapel, we have opportunities to offer a 'helping hand' with several forthcoming events, as well as be inspired by a variety of programmes. - We can volunteer with the 'Cold Weather Shelter' (see p.4), we can make contributions to the Food Bank (see p.4), and we can offer a 'helping hand' with our Chapel 'Open Day' (see p.6).

If we want inspiration, we can attend the special Choir concert 'The Armed Man' (see front page), as well as the premier performance of 'The Christmas Truce' (see p.6); or we might go along to hear the 'Channing Lecture', given by our Minister – just a few suggestions.

Last but not least, we can '*Dance into Stillness*' – in celebration of this dark season.

Ingrid Tavkar

'Darkness has been associated with fear and evil in our culture for hundreds of years but it was not always so. To the Celts and the ancient civilizations, the 'Dark' was celebrated as a place inside us where we touch and experience our spiritual roots and was known as the Mysteries'

– Glennie Kindred





PO'Nderings

From our Minister
Rev Patrick T. O'Neill

'The season of 'mellow fruitfulness' Keats, our local poet called it, and Shakespeare wrote of that time of year 'when yellow leaves or none or few, do hang Upon those boughs which shake against the cold, Bare ruin'd choirs where late the sweet birds sang'.

I love autumn, always have. But it always seems to me that even as the days grow shorter or more brisk, the pace of things picks up. There is little that is "mellow" about the lists of things to do, obligations to be kept, diaries full of appointments.

This season at Chapel we've already had one Special General Meeting at which we've been dealing with the particular challenges of financing this beloved Chapel of ours. During that discussion we were reminded that the cost of annual membership fees in our Chapel have not been raised in twenty years. And yet, of course, the costs of running this place have risen steadily, just as our personal household costs have had to keep pace with the times.

No one likes the idea of asking our members to increase their annual fees. We know that some of our most devoted members live on fixed incomes. Believe me, the leaders of the Chapel fully understand and empathise with those in this position. But the rest of us need to do what we can to lend our support as it is needed. The Congregation voted to increase the fees a bit. It was the responsible thing to do. A Chapel in 2013 cannot continue to live on a 1993 budget, not forever.

As it is now, we mainly support the activities of our Chapel through rental income from the schools and concert venues that occupy virtually all of our rooms every day and night of the week. There are times when our own committees and church events have no space available for our own activities. And yet, the age and condition of our beautiful old building will eventually lead to the need for major repairs to leaky roofs and crumbling stone facades. The income from last year's property sale has prudently been sequestered away for capital repairs when they arise, as they most certainly will.

I write this to underline to you that the leaders of the Chapel are doing all they can to see that everyone is informed of the needs of our Chapel and we ask you to join us in continued support and loyalty to this fine institution of ours. I'm more than happy to talk about this if you have questions or concerns. You are vitally important to us and we thank you most sincerely for all you do and will do for our Chapel in the years ahead. See you in church!

...po'n

Chapel Activities



Weekly Activities

Children's Programme meets every Sunday at the 11.00am service. New children of all ages are always welcome. Infants are welcome in the creche.

Chapel Choir rehearses each Wednesday at 7.30pm in the Chapel. New voices are always welcomed into the choir. No audition necessary.

A **Tai Chi class** is held each Wednesday at 5.45pm in the Chapel.

Monthly Activities and Meetings

Questing Groups – a Religious Education programme for adults, led by our Minister Rev Patrick O'Neill. Meeting on Mondays **4, 11, 18, 25 November at 7.00pm** in the Chapel. (see p.9 for more information)

Poetry Group – if you like to read and /or write poetry, the group will meet on **Monday 4 November at 7.30pm**. For more information contact George Appleby (Tel: 020 7424 9733, email: gappleby@talktalk.net)

Social Action Committee - will meet on **Tuesday 12 November at 7.30pm**

Management Board will meet on **Thursday 14 November at 7.00pm** in the Chapel Committee Room. Please contact Kerry Reid (kornreid@hotmail.com) if you wish to attend.

Book Group will meet on **Thursday 21 November at 7.30pm** at The Magdala at 2a South Hill Park in Hampstead. We will discuss 'Death in Venice' by Thomas Mann. For further information, please contact Bill Ellington at ellingtonbill@aol.com

Pot Luck Lunch - **Sunday 24 November** in the side aisle, after the morning service. This is an informal, friendly occasion - all are welcome and the request is to bring some food to share, maybe homemade or cheese/fruit/salad. We look forward to seeing you there. **Margaret Perry**

OUR CHAPEL COMMUNITY



**PLEASE SUPPORT OUR
COLD WEATHER SHELTER
FRIDAY NIGHTS & SATURDAY
MORNINGS
NOVEMBER TO JANUARY**

Homelessness can affect anybody, for any reason, the main causes being lack of money and relationship breakdown. It is increasing in Camden - by 42% in the past two years.

The Chapel is joining in Camden's Cold Weather Shelter initiative this winter for the 6th year running, providing up to 15 homeless guests each week with dinner, conversation and entertainment, a safe bed, and breakfast, all in the Chapel hall.

As the guests tell us, our Shelter really does change lives, and it also greatly enriches the lives of the volunteers who help out. There are lots of different ways to help - serving food, chatting, playing board games, staying overnight, making breakfast - or donating towards the costs (£100 per week for the 10 weeks of our Shelter)*.

If you would like to take part or find out more, please contact the co-ordinator, Claire Julian on 020 7435 8254 or claire.marley@mac.com

*If you wish to donate by cheque, please make it payable to Rosslyn Hill Unitarian Chapel (and write Cold Weather Shelter on the back and send it to the Chapel office).

*May the deeds we do with our hands,
and the words we speak without lips,
and the thoughts we think with our minds,
and the things we feel in our hearts,
be at all times worthy
of the divine spark within us.*

Weekly Offertory

Sharing the Plate



At the recent Special General Meeting it was agreed that weekly donations to the collection plate would be divided between the Chapel and a charity to be chosen by the Social Action Committee. (SAC).

At the last SAC meeting it was proposed that the offertory might support the same cause as the tea/coffee money. The cause for November and December will be our 'Cold Weather Shelter'.

It was also suggested that the congregation be invited to nominate charities (via a sign-up sheet on the noticeboard in the side aisle or by contacting a Sally Somerville (member of the SAC) email: songspots@gmail.com



**Coffee & Tea money
during November/December
in aid of our Cold Weather Shelter
(please see above)**

**Rosslyn Hill Chapel
supports a Food Bank!**



Rosslyn Hill Chapel continues to support a Food Bank in Chalk Farm. Please help by picking up one or two extra items when you shop and put them in our collection bag on a Sunday.

SHOPPING LIST

Milk (UHT or powdered)
Sugar (500g),
Fruit juice (carton)
Soup
Pasta sauces
Sponge pudding (tinned)
Tomatoes (tinned)
Cereals
Rice pudding (tinned)
Tea Bags/instant coffee
Instant mashed potato
Rice/pasta
Tinned meat/fish
Tinned fruit
Jam
Biscuits or snack bars

OUR CHAPEL COMMUNITY

Values in Action



The Social Action Committee is delighted to invite anyone who is passionate about a cause or working, volunteering or campaigning for change to tell Chapel friends about it.: Reverend Patrick has offered a 3-minute slot for anyone who wishes to share news of **VALUES IN ACTION** during morning service on the **FIRST Sunday** in the month.

If you would like to take part, please send details of your topic to Social Action Committee member, Claire Julian [claire.marley@mac.com] so that these brief contributions can be co-ordinated.

On Sunday 1 September, Hillary Ratna presented *‘Values in Action’*

ENFIELD WOMEN’S CENTRE - a brief introduction

As part of our Values in Action series, I am going to tell you just a bit about Enfield Women’s Centre, a charity providing a range of services to women in Enfield and the surrounding area. It was started in 1994 and I have been involved since January 1995, when I became Clinical Supervisor for the Counselling Service. The service has become well known and respected over the years, but it is just one aspect of the Centre’s work.

The Centre offers practical advice, self-help courses like assertive communication and confidence building, as well as practical introduction to IT, beginning with computers. Women on their own or with children can take advantage of a range of activities, from walks to cinema visits to outings to Zumba classes. Various women’s groups have used the Centre as a meeting place. The Director, Ginnie Landon, knows the area’s many agencies and the people involved in them and is able to access information and to connect with them, in order to co-ordinate help for clients.

The Counselling Service is staffed by volunteers, usually in the last stages of their training. Placements are in demand, so we get plenty of applications and can afford to choose the best. Clients are self referred or come through their GPs, Social services or a range of other agencies. We charge very low rates and finance is never a barrier for anyone seeking counselling help. The majority of women who use the counselling service pay only £5 per session.

Funding is always a worry; the Council provides a grant which is welcome but inadequate to cover costs. Courses run by the Centre are equally inexpensive, in order to be accessible. At present, they can no longer afford to pay me, but I am happy to carry on, doing assessments, interviews and group supervision on a voluntary basis, as I feel it is a contribution to an excellent cause. I hope that the Chapel will be able to offer some support to the centre as well, as one of our monthly special charities. **Hillary Ratna**

“I am only one; but still I am one. I cannot do everything, but still I can do something; I will not refuse to do something I can do.”

Edward Everett Hale

OUR CHAPEL COMMUNITY

Celebrating Robert Frost America's Favourite Poet

Tuesday 12th November 2013 (7.30pm)

**Burgh House, New End Square
Hampstead
London NW3 1LT**

Poets Fiona Sampson and Elaine Feinstein talk to Piers Plowright about the genius of American poet and Pulitzer Prize winner Robert Frost, who died 50 years ago. With readings from his work by Rev Patrick O'Neill. - Come hear our Minister!

Sunday 24 November (12.30-5.00pm)

Chapel Open to show Hampstead Fair artwork

Competition entries of children's artwork for Hampstead Christmas Fair will be on display in the Chapel so come along to see the winning selection. The Chapel will be open on the day of the fair from 12.30 to 5.00pm with tea and coffee available. If you're able to help out for a couple of hours (and not already committed to our own 'Open Chapel' event on 30 November!), please contact Kate Buchanan: kateboo@gmail.com



Stewards

3 November	Shirley King & Zoe Gerrard
10 November	Jane Crispin & Christopher Mason
17 November	Ingrid & Mohan Tavkar
24 November	Hillary Ratna & Kerry Reid

Worship Assistants

3 November	James Chiriyankandath
10 November	Zoe Gerrard (am) Julia Reid (pm)
17 November	Leighton Cole
24 November	Julia Reid

'Rosslyn Hill's Got Talent!'

On Thursday 14 November (7.00 – 9.00pm)

- an evening of home-grown members' entertainment in words, music and possibly 'other' will take place in the Chapel. There will be a retiring collection to be divided between the Cold Weather shelter held on Fridays at Rosslyn Hill Chapel, and the umbrella organisation supporting our effort. (C4WS).

Light refreshments will be provided during the interval. We look forward to seeing you there, enjoying our varied talents, in aid of this wonderful charity.

'Open Chapel'

Saturday 30 November (10.30am-3.00pm)

On this day, the Chapel will be open to all who would like to come in to look at our beautiful building and learn something of its history, browse through a book stall, and enjoy some refreshments (tea, coffee, cakes) Do come along and bring a friend or two.

HELP WELCOME!

Contributions of home made cakes, biscuits, as well as books for the Book Stall, would be appreciated.

We would also welcome a 'helping hand' on the day (sometime between 10.00am-3.00pm)

Please contact Janna Williams:
j.williams16@virginmedia.com

Community Notice Board

One panel of the side-aisle notice-board is now available for community notices. Everyone is invited to use this and any queries may be directed to Margaret Perry, usually hovering near this space each Sunday.



Other events in the Chapel

Saturday 11 November (7.30pm) - Concert by Paul Ayres and 'ad hoc' Choir. A new choral setting of Carol Ann Duffy's 'The Christmas Truce' - (Check with Paul for further details)

Saturday 16 November (10.00am) – Hampstead Women's Christmas Market

Saturday 23 November (6.00pm) - Concert by Gustavo Ubeda and Orchestra

Sunday 24 November (12.45-5.00pm) - Entries to be displayed in Chapel for the '*Hampstead Christmas Festival Art Competition*'

Friday 29 November (7.30pm) - Piano Concert by Peter Crockford

NEWS FROM THE MANAGEMENT BOARD

Any member of the Chapel is welcome to attend the Management Board meetings as an observer. If you would like to attend, as a courtesy, please contact Kerry Reid (Chair) in advance. The next meeting will be on **Thursday 14 November 2013 at 7.00pm**, at the Chapel (in the Cottage Basement Science room).

Meeting held on September the 12th 2013 Kerry Reid as chair.

Minister's Visa: There have been a few volunteers for the Search Committee following the SGM in October, though more are still needed. Another SGM is being called for the 1st December to enable us to convene a Search Committee in time for the start of 2014.

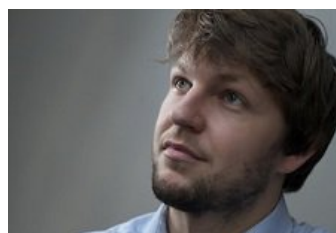
Chapel Estates: The Estates Committee is looking for more members. They are investigating ways of increasing the tenancy of Chapel buildings, currently only occupied for half of the year, in order to maximise the Chapel's assets.

Thriving Membership: Dominic Williams is the new Chair of the Membership Group. There are a number of upcoming events, such as the Invite a Friend Service (27 October), Hampstead Christmas Fair (24 November) and Open Chapel (30 November). All of these are opportunities to encourage new people to become members, which will be a vital factor in the Chapel's prosperity going forward.

Treasurer's report: As was highlighted at the SGM, there is a considerable shortfall in the Chapel accounts each month. This urgently needs to be ameliorated through increased giving from members, through plate donations, standing order donations and increased membership. The Board also discussed the details of the 'Share the Plate' charity donations.

Ann Finer's memorial rose: The Flower Group have been asked to compose words for a plaque to go by Ann Finer's memorial rose which will be planted soon.

Profile of Matthew Fletcher- Organist and Music Director at our Chapel



London based pianist Matthew Fletcher graduated from the Royal Academy of Music, where he studied with Michael Dussek and Pascal Nemirovsky. Whilst there he won numerous awards for piano accompaniment, including the Maggie Teyte prize for French song, the 'Brenda Webb Award', the 'Rex Stephens Award' for Schumann lieder, the 'Major van Someren-Godfery award' for English Song, and the 'Marjorie Thomas Award' for art song. He also holds a First class degree in music from Gonville and Caius College, Cambridge, where he was organ scholar.

Matthew's performances have taken him all over the UK and Europe. In the past year he made his Wigmore Hall debut, and has performed at venues such as St Martin-in-the-fields, the Purcell Room, St John's Smith Square, and Kings Place. For the year 2012/2013, Matthew will hold the Hodgson Memorial Fellowship at the Royal Academy of Music. Other upcoming projects include Julian Phillip's 'The Yellow Sofa' at the Glyndebourne festival and on tour, and recitals at the Oxford Lieder Festival and Winchester Festival.

Matthew is very grateful for the support he has received for his study. He received a 'Sir Elton John Scholarship' to the Academy, is a recipient of the Musician's Benevolent Fund's 'Sir Henry Richardson Scholarship' and the 'Ian Fleming Charitable Trust Award' and has been supported by the Countess of Munster Musical Trust. He was a Britten-Pears Young Artist for 2012.

Matthew has done an outstanding job as Acting Organist over the past months. Both his organ and piano playing have greatly enriched the mood of our Sunday mornings, complementing the other elements of the services and maintaining the high standard of music that we have come to expect at Rosslyn Hill.

"Music gives a soul to the universe, wings to the mind, flight to the imagination and life to everything." (-Plato)

This is a copy of the Treasurer's Report to the SGM on Sunday 29 September 2013

We have just reviewed the accounts from last year. We had written a budget this time last year which predicted income and costs based on the previous year's performance and we did not meet our targets. Specifically, on income from the membership in 2011-12, we took in £40k (on a cost base of £225k). We were hoping that the membership might both grow and dig a little deeper and contribute more so budgeted an increased membership contribution of £53k but instead the membership contributions fell to around £37k. Four families give 25% of the total givings.

This is on the back of a rising cost base. Our expenses in 2011-12 were £225k and rose to around £280k this year. About £55k of that increase was due to Chapel repairs and maintenance that was not predicted last year. So with a fall in membership contributions of 8% and a rise in costs of around 20%, we have attempted – more or less successfully- to make up the deficit through our property activities. (Some of these costs were borne by the tenants.)

But this takes a lot of work, at this low rate of congregation support contributions and high rate of expenses. The organisation depends heavily on those of us who take leadership of this congregation watching these numbers closely, to contain costs, find and maintain sources of revenue to meet our obligations. This is not even taking into account the situation we leave for the next generation.

A few things you need to know:

- 1) The cost of paying our staff including our minister is approx. £700/member
- 2) The cost of keeping up our buildings and infrastructure is £900/member
- 3) The cost of tax, utilities and administration is approximately £700/member.
- 4) It costs approximately £2300/member/year to run this Chapel.



It is over to each individual here to consider if they are paying their share. The membership subscription is a small fraction of what's being spent on you. Can you consider giving more? If you cannot contribute any more, can you encourage a friend or neighbour to join so that we might be able to share the costs with more people?

In an ideal world we would like to collect all subscriptions and plate givings by standing order. I hope you can weigh up the value in your life of what RHUC gives you, assess your contribution and ask yourself if you could possibly give more. We have recommended that people consider giving at least 1% of their annual salary. An average Londoner making £32k/year would then be making a contribution of £320/year or be paying perhaps £80/quarter by standing order. That's the kind of discipline we are hoping to inspire. It seems a reasonable cost when you really consider the richness of the experience on offer here: the fact that we have one of America's best ministers who is here to serve us and who inspires us every week with the highest quality worship service and that we inhabit what is largely regarded as the cathedral church of the UK Unitarian community. **Jane Crispin**



There will be a **Special General Meeting**
after the morning service on
Sunday 1 December 2013 at 12.15pm

The purpose of this is to elect a Search Committee to conduct a Resident Labour market test. The Minister's brief will also be discussed, as well as the Code of Conduct for the committee.

In order to elect this Committee, the meeting must be quorate so please make every effort to attend. We are still seeking members to take part in this process to make up the seven members of a Search Committee required by our standing orders. If you are interested in taking part in this Committee, then please contact Kerry Reid, Chair of the Board, at khornreid@hotmail.com.



Questing Groups Autumn Session
A New Religious Education Programme for adults
Led by our Minister, Rev Patrick O'Neill

Free and open to all - call the Chapel office to pre-register
020-7433-3267

'Questing Groups' is a programme designed around small groups of six or seven people exploring questions of meaning, value, and purpose. In each session participants are invited to reflect on a short theme piece introducing a "focus question" i.e. What is God? What is Death? What does it mean to be human? What are our obligations in life? What do we wish to accomplish with our lives? What do you hold to be "Sacred"?

The aim is not to debate these questions, but rather to share from our personal experience what we understand, what we intuit, what we believe, and to discover what we can learn from each other's experience.

Note: This Autumn series does not repeat the same questions we explored in the Spring. New questions!

Do something good for yourself – come join us, and bring a friend!

Viewpoint - 'Woman's Role in a Man's World'

As most men are physically stronger than women, right from the start they went out to fight intruders and to hunt for food. Women stayed indoors and looked after home and children. From the beginning the 'stronger sex' assumed they were mentally 'stronger' as well, more intelligent and knowledgeable, more aware and wiser.

It 'naturally' followed that boys were educated and given the chance to exercise their mental 'muscle', while girls were taught to embroider and make music or to cook and clean, leaving their mental faculties largely untrained and underdeveloped. They bowed down and made the most of it, sometimes rising to positions of 'the power behind the throne'.

In the 19th century women started to free themselves from male domination and suppression. This is now an ongoing process, but it will take time for all men to fully abandon the ingrained and inbred assumption that women are the mentally and spiritually weaker sex, and thus their underlings.

Hand in hand with the liberation of women I foresee another positive change: In general men are more aggressive and ready to fight, whereas women are usually more patient, understanding and communicative. From time immemorial the world has been plagued by wars, most of them instigated and led by men. Many people are already aware of the fact that wars don't solve anything and should be avoided at all costs. Where men move forward swiftly and aggressively, most women have a natural bent towards listening, calming, reassuring and repairing. In time, women's influence and power will be such that wars will be avoided. Instead, the root causes of conflicts will be found and discords will be resolved with patience and dialogue. That will be the time when a natural balance of qualities of both sexes will develop and enable us to create a peaceful world. **Britta Burtles**

(Articles express the views of the authors)

*Male and female represent the two sides of the great radical dualism.
But in fact they are perpetually passing into one another.
Fluid hardens to solid, solid rushes to fluid.
There is no wholly masculine man, no purely feminine woman'.*

Margaret Fuller, from *'Woman in the Nineteenth Century'* 1845

OUR CHAPEL COMMUNITY



On Sunday 6 October, Kerry & Julia Reid presented '*Values in Action*'
'Below the line'

Kerry: A shocking 1.4 billion people in the world (about 20% of the global population), live below the extreme poverty line. This is defined as having less than the equivalent of £1 a day to live on – not only to spend on food, but also for housing and all other essentials.

Last year, Julia and I read an article about 'Live below the line'. This is a campaign to encourage people to empathise with those who live below the poverty line and to raise awareness of their plight by living on £1 a day for food, for 5 days. Julia and I decided to do this and looked up the rules online: every bit of food must be added to your total, even a pinch of salt; drinks are included; no free food must be accepted (though we were allowed to use any food we had grown). We decided to donate the money we saved to UNICEF – a charity that works with children, many of whom are in poverty.

Julia: We knew it was going to be difficult to live on a £1 a day each, but it was even harder than we had envisaged. Planning out what we were going to eat was almost a full time job. I went round several supermarkets and wrote down the prices of their cheapest products. I always thought that I was good at budgeting, but we had to go back to the drawing board several times until we came up with a menu for £10 for 5 days. We realised that teabags were precious and that we would have to share just 2 a day. We shopped in two different supermarkets and I was worried that I would leave an item in the shop, and therefore have even less to eat.

Kerry: I was worried I would be hungry – it makes me very grumpy, as Julia will tell you! There were times when we both felt hungry, and we were aware of not being able to snack when we wanted. Even when we weren't hungry, we knew that we were missing out on vital nutrients, especially those from fruit and veg.

Julia: I found it hard not to accept free food, for example in the staffroom and on courses, but I knew that if I had, I would not have been truly empathising with someone who only had £1 a day. I know that if I only had a £1 a day to live on, it is unlikely I would have a job where there is complimentary food on offer. I also found it difficult not spending any money on extras when out and about. I don't think of myself as a big spender, but realised that it is hard not having the option to buy a cold drink when I had run out of water for example.

Kerry: We were both looking forward to the end of the 5 days, but we were surprised in a way that we didn't feel like eating lots and splashing out on more expensive food. It felt wrong to spend £3 on a sandwich, knowing that for some people, this is the budget for 3 days. However, we appreciated the small pleasures, such as having jam on our toast, which we weren't able to do during the 5 days. We don't have a luxury lifestyle and we have always tried not to waste food, but now we are even more careful and appreciative of what we have. We learnt not to let any food escape from the pan and we only need one teabag to make two cups of tea – it is precious!

Julia: Taking part in 'Below the line' has definitely helped to raise our awareness of global poverty, including in Britain. Kerry and I have noticed the need for more food banks and we have been keen to support existing ones. We are pleased that the Chapel is now collecting for the Chalk Farm food bank. Through partaking in 'Below the line' we have realised how much people must rely on this service as £1 a day, even just for food, is just not enough for a healthy, active life. **Kerry & Julia Reid**

*"The world has enough for everyone's need,
but not enough for everyone's greed."*

Mahatma Gandhi

Our Larger Unitarian Movement



“...More Than Merely Christian -
Emerson’s Wider Vision For Unitarianism”

The 2013 Channing Lecture by Rev Dr Patrick T. O’Neill

Saturday 23 November at 3.00pm

Golders Green Unitarians
Hoop Lane
London NW11 8BS

William Ellery Channing was the acknowledged founder and leading voice of early Unitarianism in America. It was the second generation of American Unitarians – inspired by the clarion call of Ralph Waldo Emerson’s 'Divinity School Address' in 1838 – that took Unitarianism beyond the confines of traditional Judeo-Christian theology to a wider vision. That wider vision drew inspiration and spiritual sustenance from many different theological sources, not merely from liberal Christian thought.

Ever since that time, the Unitarian faith has been shaped by what might be called a 'Trans-Christian' eclectic vision that reveres religious truth wherever it might be found.



**A weekend by the sea filled with Celebration,
Inspiration, and Education**

21-23 February, 2014

**Lighting the fuse for an explosion
of Unitarian vitality!**

For Unitarians and other seekers with a passion for the future. Sponsored by the London and Southeast district and open to all.

More than 20 workshops on personal spirituality, congregational health, and worship.
Multiple workshops: traditional, contemplative, and contemporary
Programme for children and youth and special pricing for weekend!

Bursaries available to make this event accessible to all, regardless of distance or financial circumstances

Pre-conference ministerial workshop and main worship service led by Rev. Bill Darlison

Book early at <http://fusefest.org.uk/registration-form>
Visit the FUSE website: <http://fusefest.org.uk>



**National Youth
Programme**

'Make Believe'

Inter Weekends (11-14 year olds)

15 – 17 November 2013

The Nightingale Centre, Great Hucklow.

Join us for friendship, fun, games,
art & drama and 'make believe'.

'The Power of Listening'

Senior Weekends (14-17 year olds)

15 – 17 November 2013

The Nightingale Centre, Great Hucklow.

Join us for a weekend of fun, sharing,
discussion, reflection and a host of activities
exploring the theme of listening.

Contact: John Harley 07985 900 935

NOVEMBER DIARY

(* = further details elsewhere in Bulletin)

Sunday 3 November

11.00am – Morning service – 'By Little Graces, Small Virtues'
Led by Rev Dr Patrick T. O'Neill

7.00pm – Evening service - 'By Little Graces, Small Virtues'
Led by Rev Dr Patrick T. O'Neill

Monday 4 November

7.00pm – Poetry Group meets*

Monday 4 November

7.00pm – Questing Groups sessions in the Chapel*

Wednesday 6 November

5.45pm – Tai Chi class in the Chapel*

7.30pm – Choir rehearsal in the Chapel*

Sunday 10 November

11.00am – Morning service – 'Vita Brevis, Ars Longa -
Life Is Short, Art Is Long'. Led by Rev Dr Patrick T. O'Neill

7.00pm – Evening service - **Special Choir Concert**
'The Armed Man' - Led by Georgina Drewe (Director)

Monday 11 November

7.00pm – Questing Groups sessions in the Chapel*

Tuesday 12 November

7.30pm – Social Action Committee meets

Wednesday 13 November

5.45pm – Tai Chi class in the Chapel*

7.30pm – Choir rehearsal in the Chapel*

Thursday 14 November

7.00pm – Management Board meets in the Committee room*

Thursday 14 November

7.00 – 9.00pm – '*Rosslyn Hill Got Talent*'* in the Chapel

Sunday 17 November

11.00am – Morning service – '*Changing Landscapes*'
Led by Guest Speaker Marian Baker (GA Vice President)

7.00pm – Evening service – '*Changing Landscapes*'
Led by Guest Speaker Marian Baker (GA Vice President)

Monday 18 November

7.00pm – Questing Groups sessions in the Chapel*

Wednesday 20 November

5.45pm – Tai Chi class in the Chapel*

7.30pm – Choir rehearsal in the Chapel*

Thursday 21 November

7.30pm – Book Group meets*

Sunday 24 November

11.00am – Morning service – '*When The Key Is Lost
and All Falls Silent*'* - Led by Rev Dr Patrick T. O'Neill

12.30pm - Pot Luck Lunch in the side aisle*

12.30 – 5.00pm - '*Hampstead Fair*' artwork exhibition*

7.00pm – Evening service – '*When The Key Is Lost
and All Falls Silent*'* Led by Rev Dr Patrick T. O'Neill

Monday 25 November

7.00pm – Questing Groups sessions in the Chapel*

Wednesday 27 November

5.45pm – Tai Chi class in the Chapel*

7.30pm – Choir rehearsal in the Chapel*

Saturday 30 November

10.30am – 3.00pm – '*Open Chapel*' *

Chapel Directory

Chapel Office

Sharron Conduit
Tel: 020 7433 3267
Fax: 020 7435 7457

Chapel E-mail

admin@rosslynhillchapel.com

Chapel Online

www.rosslynhillchapel.com
www.facebook.com/rosslynhillunitarianchapel

Chapel Address

Rosslyn Hill Unitarian Chapel, 3 Pilgrims Place
London NW3 1NG United Kingdom

Care & Support

Deborah Frankel
Tel: 020 8209 1000
Email: debfrankel@totalise.co.uk

The Minister

The Rev Dr Patrick O'Neill, The Manse, 3 Pilgrim's Place,
London NW3 1NG Tel: 020 7435 3506
E-mail: revponeill@aol.com

Children's Programme

Anthea Williams
Email: anthea.williams25@gmail.com

Bulletin Team

Ingrid Tavkar, Editor
Editorial Team:
Stella Fakiyesi, Margaret Perry,
Janna Williams, Erich Wagner
Layout: Ingrid Tavkar
Tel: 020 8455 0162; Email: RHUCbulletin@yahoo.com

Registered Charity 1131346
Registered Co. No. 05992717